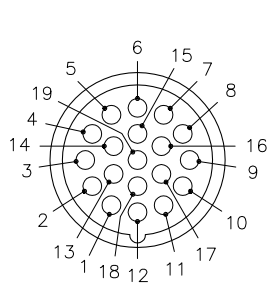
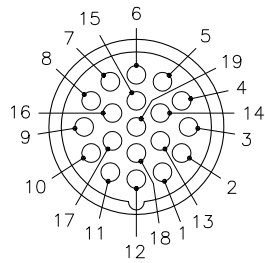


MALE END VIEW

FEMALE END VIEW



- 1 = VIOLET
- 2 = RED
- 3 = GRAY
- 4 = RED/BLUE
- 5 = GREEN
- 6 = BLUE
- 7 = GRAY/PINK
- 8 = WHITE/GREEN
- 9 = WHITE/YELLOW
- 10 = WHITE/GRAY
- 11 = BLACK
- 12 = GREEN/YELLOW
- 13 = YELLOW/BROWN
- 14 = BROWN/GREEN
- 15 = WHITE
- 16 = YELLOW
- 17 = PINK
- 18 = GRAY/BROWN
- 19 = BROWN

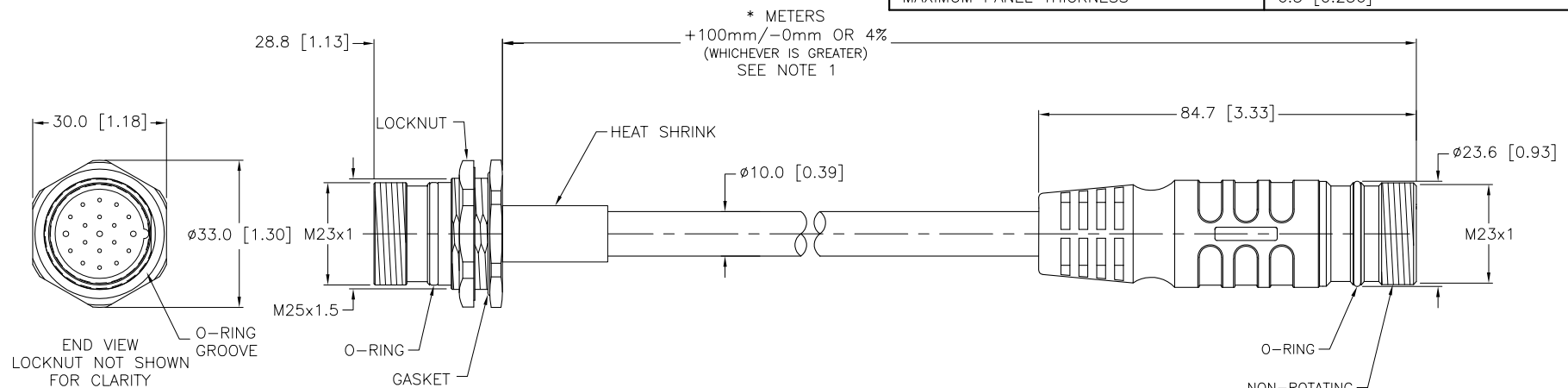


M23 connector

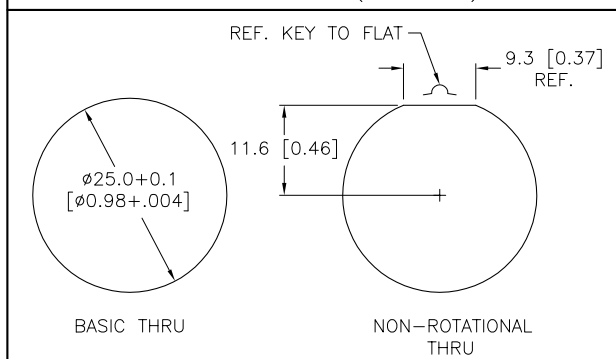
M23 connector

SPECIFICATIONS

| | |
|-------------------------------|--|
| CONTACT CARRIER MATERIAL | NYLON or PBT |
| MOLDED HEAD MATERIAL/COLOR | TPU/BLACK |
| CONTACT MATERIAL/PLATING | BRASS/GOLD |
| COUPLING NUT MATERIAL/PLATING | BRASS/NICKEL |
| O-RING/GASKET MATERIAL | RUBBER (NBR or FPM) |
| RATED CURRENT [A] | 9.0 A (PINS 6,12,19), 2.0 A (ALL OTHERS) |
| RATED VOLTAGE [V] | 150 V |
| OUTER JACKET MATERIAL/COLOR | PVC/YELLOW |
| CONDUCTOR INSULATION MATERIAL | PVC |
| NUMBER OF CONDUCTORS [AWG] | 3x18 AWG, 16x22 AWG |
| DRAIN/SHIELD | 20 AWG/POLYESTER FOIL |
| TEMPERATURE RANGE | -40°C to +105°C (-40°F to +221°F) |
| PROTECTION CLASS | IEC IP67 |
| MAXIMUM PANEL THICKNESS | 6.5 [0.256] |



PANEL CUTOUT (TYPICAL)



NOTES:

1. "*" INDICATES CABLE LENGTH IN METERS. CONTACT TURCK TO ORDER SPECIFIC LENGTHS.

SOURCE DRAWING - FOR REFERENCE ONLY

| | | | | | |
|---|---|--|-------------|---|--|
| RELATED DOCUMENTS 1. 2. 3. 4. | 3RD ANGLE PROJECTION | THIS DRAWING IS CONFIDENTIAL AND THE PROPERTY OF TURCK INC. USE OF THIS DOCUMENT WITHOUT WRITTEN PERMISSION IS PROHIBITED. | | 3000 CAMPUS DRIVE MINNEAPOLIS, MN 55441 1-800-544-7769 (763) 553-7300 (763) 553-0708 fax turck.com | |
| | | TURCK IAC High Technology Sensors and Automation Controls | | DATE 04/05/06 | |
| MATERIAL SEE SPECIFICATIONS | ALL DIMENSIONS DISPLAYED ON THIS DRAWING ARE FOR REFERENCE ONLY | DRFT | RDS | DESCRIPTION CSFD CXM 19-19-* | |
| FINISH SEE SPECIFICATIONS | | APVD | SCALE 1=1.5 | IDENTIFICATION NO. | |
| UNIT OF MEASUREMENT MILLIMETER [INCH] | | DO NOT SCALE THIS DRAWING | | REV D | |
| FILE: 777012600 | | SHEET 1 OF 1 | | | |

| | | | | |
|-----|-----------------------|-----|----------|---------|
| D | UPDATE CABLE DIAMETER | KMY | 11/01/11 | 36150 |
| REV | DESCRIPTION | BY | DATE | ECO NO. |